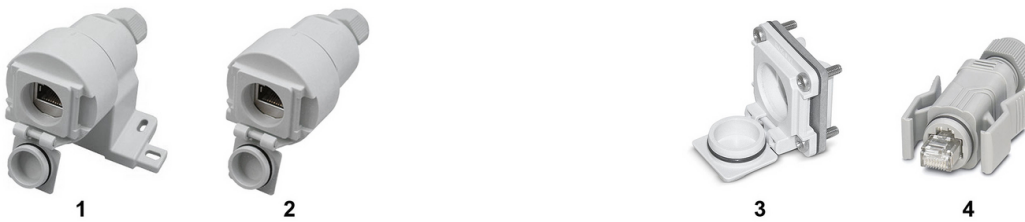


Outlets IP67

surface mounted & installation in devices
with 1 RJ45 module MS-C6_A



- 1 Data outlet IP67
- 2 Coupling socket IP67

- 3 Mounting flange IP67
- 4 RJ45 plug body IP67 to assemble patch cables

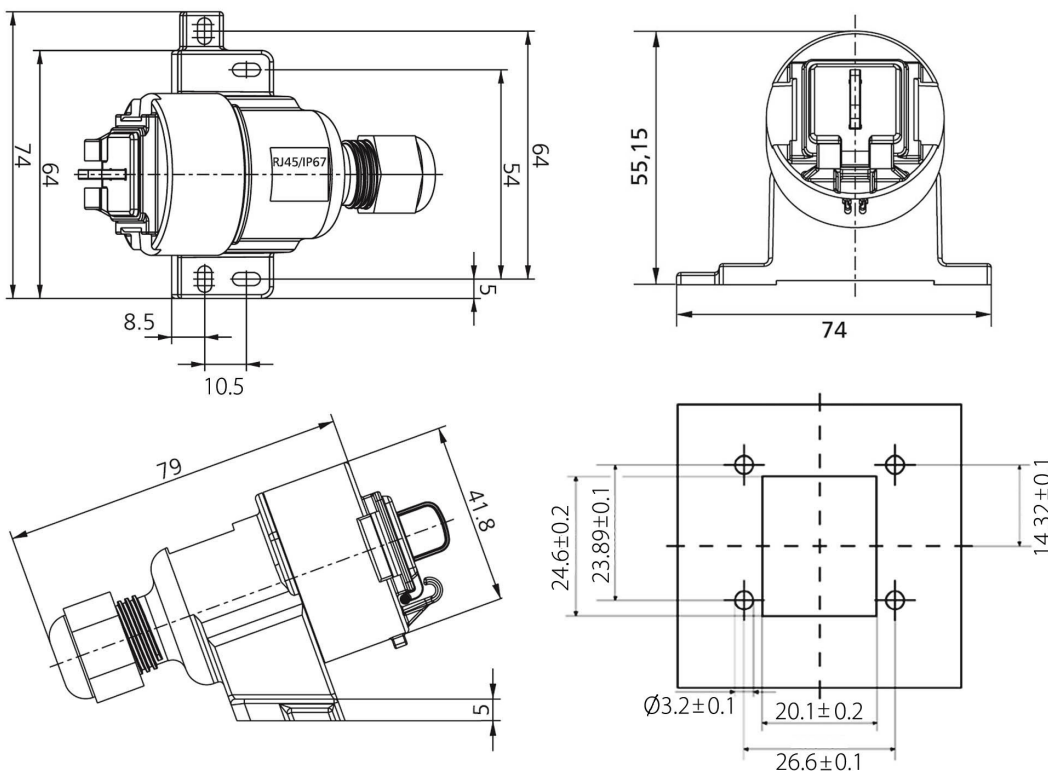
DESCRIPTION

Data outlets IP67 with 1 RJ45 module MS-C6_A 1/8 Cat.6_A (shielded) for the transmission of Ethernet protocols in harsh industrial environments in which contaminations may occur:

- 1. Surface-mount data outlet IP67 with 1 module MS-C6_A 1/8 shielded
- 2. Coupling socket IP67 with 1 module MS-C6_A 1/8 shielded
- 3. Mounting flange IP67 with 1 module MS-C6_A 1/8 shielded - for installation in devices
- 4. RJ45 plug body IP67 - to assemble IP67 patch cables on-site

In order to ensure a secure data transmission, the compatible components offer a large 360° braid connection that results in excellent EMC properties. The covers that are permanently attached to the casings prevent water, dust, dirt and other contaminants from entering the RJ45 jack when unmated. Usable in connection with IP67 or standard RJ45 patch cords in different lengths.

DESIGN



APPLICATION

Structured premises cabling in the industrial sector - components with protection rating IP67 in accordance with EN 50173-2 (draft) and environment classes M3, I3, C3, and E3. These articles should not be used outdoors because of the risk of condensation.

Outlets IP67

surface mounted & installation in devices
with 1 RJ45 module MS-C6_A



GENERAL PROPERTIES

- Fulfil protection rating IP67 when connected to an IP67 plug
- Connection with customary RJ45 plugs possible (without IP rating)
- Plug surface in accordance with IEC 61076-3-106 (option 6)
- Environment classes M3, I3, C3, and E3 in accordance with EN50173-2
- IP67 cover, permanently attached
- Large 360° braid connection, excellent EMC properties
- Add-on surface mounting possibility
- Easy to open modules, reusable
- Add-on unit with an 8-pin RJ45 jack
- Easy and time-saving installation
- Fully shielded modules

VERSIONS

Article No.	Product	Colour (similar to)	PU
309155	Data outlet IP67 with 1x RJ45 module MS-C6 _A	light grey, RAL 7035	1 pc.
309156	Coupling socket IP67 with 1x RJ45 module MS-C6 _A	light grey, RAL 7035	1 pc.
309157	Mounting flange IP67 with 1x RJ45 module MS-C6 _A	light grey, RAL 7035	1 pc.
417520	RJ45 plug body IP67, shielded, for field assembly	light grey, RAL 7035	1 pc.