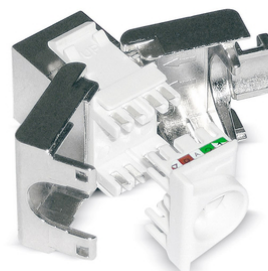
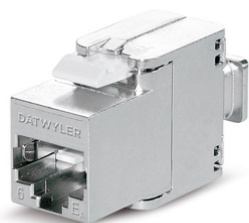


Module KS-TS 1/8 tool-less slimline Cat.6/E_A

RJ45 module, shielded, Category 6/E_A



RJ45 module KS-TS 1/8 tool-less slimline Cat.6/E_A



DESCRIPTION

For the transmission of digital and analogue voice-, video- and data signals. The module KS-TS is designed to shorten the termination and installation times. It exceeds the IEC 60603-7-5 standard's requirements for Cat. 6 connecting hardware up to 250 MHz. It also fulfils all Class E_A Channel requirements up to 500 MHz when combined with Cat. 7 or Cat. 7_A data cables. Therefore it is applicable for 10-gigabit Ethernet transmissions in accordance with IEEE 802.3. Useable for Power over Ethernet Plus (PoE+) corresponding to IEEE 802.3at.

Solid zinc die casting housing with mounting clip for installation in Keystone panels and outlets. Compact construction for high packing density in faceplates/outlets (up to 3 modules). Contact spring with phosphor bronze alloy, plated with gold. For connecting the wires a wire manager is used in combination with two integrated moveable housing wings for tool-less IDC connections. Only for cutting the wires a plane wire cutter is necessary. Strain relief via cable tie. The module is re-usable.

MECHANICAL PROPERTIES

Solid copper wire	0.50 mm (AWG 24) to 0.65 mm (AWG 22)	
Re-connection	for AWG 22, AWG 23 and AWG 24 when using the same or bigger wire diameter	
Stranded copper wire	CU 7702 flex (AWG 26/7), re-usable once	
Diameter over insulation	0.70 mm to 1.40 mm (1.60 mm)	
Temperature range	storing:	-40°C to +70°C
	during installation:	-10°C to +60°C
	in operation:	-20°C to +60°C
Dimensions	Width x Height x Length	14.6 mm x 23.2 mm x 39.8 mm (slimline)

GENERAL PROPERTIES

Termination Wire guides with colour coding in accordance with T568-A or T568-B

STANDARDS

Standards IEC 60603-7-5 (Cat.6 shielded, 250 MHz)
IEC 60512-99-001 (PoE+)
ISO/IEC 11801:2002 / Amd.2:2010
EN 50173-1:2011
TIA/EIA 568-B.2-10:2008

Module KS-TS 1/8 tool-less slimline Cat.6/E_A

RJ45 module, shielded, Category 6/E_A



EMC shielded
Cat./Class Cat.6 / Class E_A (Channel) when used together with Cat.7 / 7_A data cables

VERSIONS

Article Number	Product	Colour	PU
418054	RJ45 module KS-TS 1/8 tool-less slimline Cat.6/E _A shielded	metal	10 pcs.