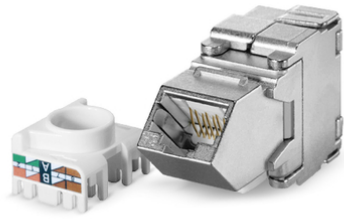


Module KS-TA 1/8 Cat.6/E_A, 45 degree angled

RJ45 module, shielded, Category 6/E_A



RJ45 module KS-TA 1/8 Cat.6/E_A
shielded, 45 degree angled

Patch panel KS 24x-s, 19"/1U, shielded



DESCRIPTION

For the transmission of digital and analogue voice-, video- and data signals.
The module KS-TA exceeds the IEC 60603-7-5 standard's requirements for Cat. 6 connecting hardware up to 250 MHz.
It also fulfils all Class E_A Permanent-Link (PL) requirements up to 500 MHz when combined with Category 7 or 7_A data cables. Therefore it is applicable for 10-Gigabit Ethernet transmissions in accordance with IEEE 802.3.
Useable for Power over Ethernet Plus (PoE+) corresponding to IEEE 802.3at.
The module KS-TA is suitable for the patch panel KS24x-s (Article No. 418023) only.
Due to the module's 45 degree angled front patch connections can be made diagonally from left and right.

Solid zinc die casting housing with mounting clip for installation in Keystone panel KS 24x-s.
Contact spring with phosphor bronze alloy, plated with gold.
For connecting the wires a wire manager is used in combination with two integrated moveable housing wings for tool-less IDC connections.
Only for cutting the wires a plane wire cutter is necessary.
Strain relief via cable tie.
The module is re-usable.

MECHANICAL PROPERTIES

Solid copper wire	0.50 mm (AWG 24) to 0.65 mm (AWG 22)
Re-connection	for AWG 22, AWG 23 and AWG 24 when using the same or bigger wire diameter
Stranded copper wire	CU 7702 flex (AWG 26/7), re-usable once
Diameter over insulation	0.70 mm to 1.40 mm (1.60 mm)
Temperature range	storing: - 40° C to + 70° C during installation: - 10° C to + 60° C in operation: - 20° C to + 60° C

GENERAL PROPERTIES

Termination Wire guides with colour coding in accordance with T568-A or T568-B

STANDARDS

Standards IEC 60603-7-5 (Cat.6 shielded, 250 MHz)
ISO/IEC 11801:2002 / Amd. 2:2010
EN 50173-1:2011

Module KS-TA 1/8 Cat.6/E_A, 45 degree angled

RJ45 module, shielded, Category 6/E_A



EMC TIA/EIA 568-B.2-10:2008
shielded
Cat./Class Cat.6 / Class E_A (Channel) when used together with Cat.7 / 7_A data cables

VERSIONS

Article Number	Product	Colour (similar to)	PU
418068	RJ45 module KS-TA 1/8 Cat.6/E _A shielded, 45 degree angled	metal	10 pcs.
418023	Patch panel KS 24x-s, 19"/1U, shielded	black, RAL 9005	1 pc.