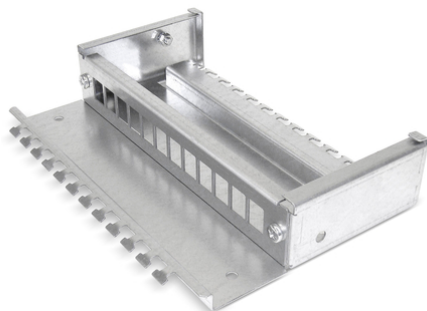


Consolidation Point box

12 and 24 ports



Box base with mounted 12x MGK front plate (delivery without front plate) Consolidation Point box, 12 ports, with cover and lock (optional)

DESCRIPTION

For the termination of data cables in a Consolidation Point (CP), typically installed in raised floors.

Box accepts one 12-port or 21-port front plate

Two-part construction with box base and cover, both made of galvanised steel sheet

Snap-in cover, can be opened and completely removed from the box base without any tools

Brush strips on front and rear

Protection rating IP20

Front plate 12x MGK suitable for the following Datwyler modules:

- PS-GG45 7_A 4P shielded
- RJ45 module KS-T Plus 1/8 Cat. 6_A shielded
- RJ45 module MS-K Plus 1/8 Cat. 6_A shielded
- RJ45 module MS-C6_A 1/8 Cat. 6_A 180°-K shielded
- RJ45 module KS-T 1/8 Cat. 6/E_A shielded
- RJ45 module KS-TS 1/8 Cat. 6/E_A shielded
- RJ45 module KU-T 1/8 Cat. 6 / Cat. 5e unshielded

DIMENSIONS

W x H x D: 12 ports: 260 x 55 x 190 mm (with lock: 57 mm)
 24 ports: 480 x 55 x 190 mm (with lock: 57 mm)

NOTE

Front plate needs to be ordered separately

VERSIONS

Article Number	Product	Colour (similar to)	PU
417483	Consolidation Point box, 12 ports (delivery without front plate)	steel sheet, galvanized	1 pc.
417484	Front plate FP 12x MGK for 12-port CP box	steel sheet, galvanized	1 pc.
417489	Consolidation Point box, 24 ports (delivery without front plate)	steel sheet, galvanized	1 pc.
417490	Front plate FP 24x MGK for 24-port CP box	steel sheet, galvanized	1 pc.
417485	Lock for Consolidation Point box, keyed alike	steel sheet, galvanized	1 pc.